

# Frictionless Wi-Fi Access with ElevenOS Personal Pass Key

For long-term connectivity, particularly in the multifamily industry, Personal Pass Key solves common Wi-Fi access challenges, including captive portal overwhelm and browser-less device access. Each user is provided with a unique Wi-Fi password, which we call a Personal Pass Key. The experience mimics the way most of us are accustomed to accessing the Wi-Fi, resulting in connectivity that is simpler, smarter, and more secure.

## Ditch the Captive Portal, Keep Simplicity & Security



### Dynamic Onboarding

Users receive a link to the onboarding page via email. From there, they simply accept the terms of use and then receive their SSID and Personal Pass Key to access the Wi-Fi. Users can also opt-in for SMS, and receive their key and future notifications via text message.



### Secure Authentication

Instead of a typical captive portal experience where users enter a username and password, the Personal Pass Key acts as both, securely connecting them to their SSID. Each user has a unique key, even when sharing the same SSID, and network traffic is encrypted separately.



### Personal Area Networks (PAN)

Once a user connects their device to their network SSID, the device automatically joins their Personal Area Network and they'll be able to connect securely to it from any other networked devices. Devices and users can also easily be moved to another SSID in the same or other property.



### Browser-less Device Support

Getting browser-less devices, like gaming consoles and printers, online is easy and convenient with Personal Pass Key. IT teams can significantly cut down on redundant support calls about users not being able to connect their Smart TV and other headless devices.



### One or Many SSIDs

Depending on architecture, each unit gets an SSID or a single SSID could be broadcast across the whole property. In the case of multiple SSIDs, ElevenOS manages the WPA-2 key for each. With one SSID, ElevenOS manages a pool of WPA-2 keys that are allowed to access the network.



### Analytics & Reporting

Stay on the pulse of Wi-Fi performance across multiple devices, users and properties. With ElevenOS, you can understand the ROI of managed Wi-Fi with downloadable usage and revenue reports. Because each user has a unique key, it's easy to see who is accessing the Wi-Fi as well.

# A Better Wi-Fi Solution for Long Term Connectivity



## Frictionless Experience

Once a user goes through the initial enrollment process, any device with the correct WPA-2 key is automatically associated with and stays connected to the right network, even if the MAC address changes.



## Quick Adoption

By design, Personal Pass Key does not require users to change the behavior they're used to when accessing Wi-Fi networks; they simply select their network SSID and enter their unique WPA-2 key and are connected.

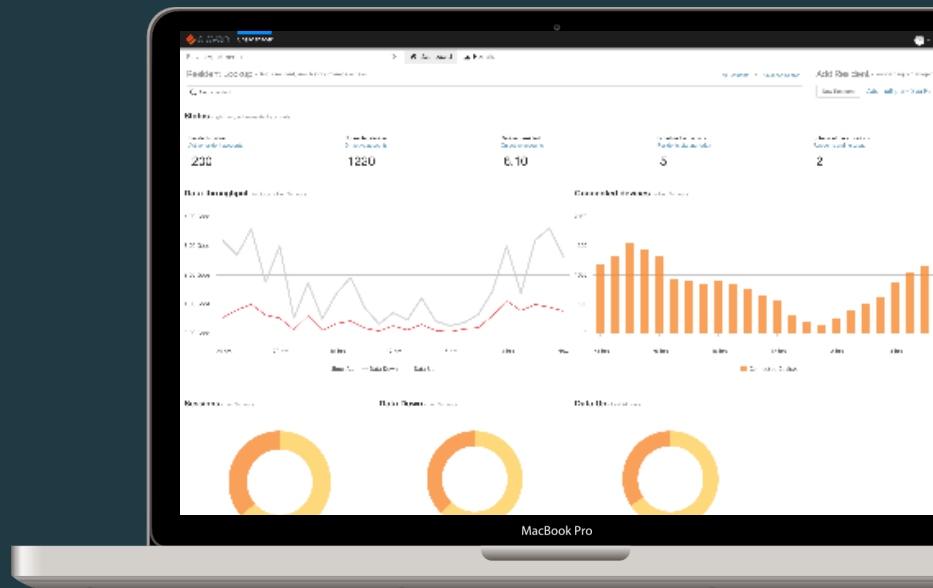


## Reduced Support Costs

For multi-system and network operators, the implementation of our Personal Pass Key solution has resulted in up to a 60% reduction in support calls, realizing a significant savings in the cost to operate.

## Purpose-Built for the Multifamily Industry

The Personal Pass Key solution is ideally suited to managed Wi-Fi for apartments, student housing, and others in the multifamily industry. On move-in day residents receive an email linked to an onboarding portal. After enrollment, residents simply select their SSID and enter their passphrase to get connected on any of their devices, which will be remembered, just like a traditional home network. By removing the captive portal, residents are happier and IT staff receive fewer support calls related to portal issues and connecting their browser-less devices.



## Eleven is a Strategic & Trusted Wi-Fi Expert



### 4B+ Annual Authentications

With over 12 million authentications per day, ElevenOS is a proven platform powering connectivity.



### 6,000+ Global Customers

ElevenOS is trusted at thousands of locations across 50 countries in multifamily, hospitality, and beyond.



### 17+ Years of Innovation

Founded in 2002, Eleven truly understands the history of Wi-Fi and where it's headed.



Contact us today for a free Wi-Fi consultation or demo

[www.elevensoftware.com](http://www.elevensoftware.com)

(503) 222-4321

[sales@elevensoftware.com](mailto:sales@elevensoftware.com)