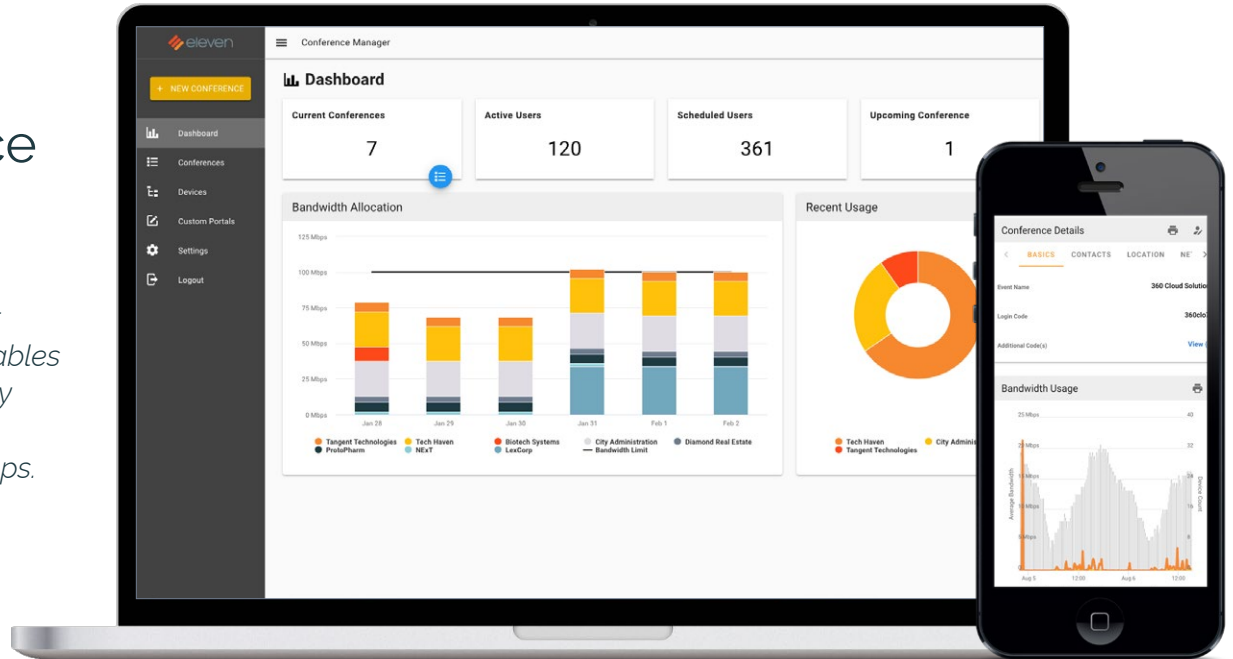


ElevenOS Conference Manager

A simple and smart dashboard that enables non-IT staff to easily manage Wi-Fi for conferences & groups.



Product Overview

Acting as your group Wi-Fi command center, **ElevenOS Conference Manager** enables custom conference connectivity, without the hassle. Conference Manager puts the power at your fingertips to schedule Wi-Fi access for new conferences (one-time or recurring), manage existing conferences, and view usage reports for individual events or the meeting space as a whole. Conference Manager was built to solve the unique challenges of group Wi-Fi access.

Who Benefits & Why

- 1. Service Providers:** Add more value to your service offering without adding support capacity—Conference Manager enables users to make their own simple changes.
- 2. Brands:** Get more out of your event space by delivering the personalized Wi-Fi experience that today's conferences and groups expect.
- 3. Organizers:** Take control and make Wi-Fi changes on the fly, like access codes, captive portal and network names, without having to involve IT every step of the way.

Key Features

User-friendly Dashboard: Configure all aspects of conference connectivity from a web-based dashboard. Responsive design enables easy access from smartphones, tablets, etc.

Flexible Authentication: Custom access codes are easy to create and most commonly used for groups, but advanced options, like Hotspot 2.0, are also available.

Dynamic Bandwidth Settings: Impose bandwidth limits for individuals or the whole group, set a concurrent user limit for each event, and configure traffic priority with just a few clicks.

Custom Conference Portals: Give each conference a unique look and feel for attendees. Manage and re-use custom portal pages using ElevenOS Portal Manager.

Detailed Reporting: Compare Wi-Fi usage and revenue data across multiple properties and segment by brand, sub-brand, region, hardware type or service provider.

CONFERENCE MANAGER

Advanced Features

Available for Aruba, Meraki & Ruckus wireless networks

Vanity SSIDs: Easily customize an SSID for each dedicated conference VLAN to make it obvious to attendees which network to connect to.

Dark VLANs: Isolate ports in order to restrict use for a specific conference and segregate the conference VLAN from the rest of the network for heightened security.

Custom Wired Ports: From printers to presenting devices, easily map wired ports to specific events or conference area with customized settings for each.

Portal Bypass Mode: Depending on the desired attendee experience, disable the portal entirely for a specific conference or group with just a few clicks.

Setup & Support

Rapid Deployment: As a fully integrated add-on, Conference Manager is easy to enable directly in the ElevenOS admin tool for one or multiple sites.

Easy Access: Once Conference Manager is enabled for a site, it can be easily accessed from the Admin tool or Site Manager dashboard, with a special dashboard just for meeting planners.

Training & Support: How-to documentation and videos are available 24/7 to educate users of all levels and features, like an Audit Trail, make troubleshooting a breeze.

HTNG Compliant: Meeting the specifications of industry experts with Hospitality Technology Next Generation (HTNG), Conference Manager was built to solve hospitality's complex challenges.

GPNS Certified: Meets all Marriott Global Property Network Standards (GPNS) requirements and enables integrators to deliver sought-after capabilities while compiling with brand standards.

Supported Hardware

- AntLabs
- Aruba*
- Cisco
- Meraki*
- Mikrotik
- Nomadix
- RG Nets
- Ruckus*

* Supports advanced wireless features

Common Use Cases

Hotels & Resorts

Conference Manager was built to solve common challenges for hospitality event staff. Hotels of all sizes will love the ability to put Wi-Fi controls in the hands of event planners. Conference Manager is HTNG-compliant and meets Marriott and Hilton brand standards.

Convention Centers

Get the power of better event Wi-Fi at your fingertips with the ability to manage many events with ease. With Conference Manager, convention centers can attract lucrative conference business by delivering the high-performance, frictionless connectivity that today's attendees expect.

Event Venues

From stadia to concert venues and everything in between, Conference Manager helps event venues deliver a great guest-Wi-Fi experience that delights attendees. The web-based dashboard is also easy to access on-the-go from any device.

www.elevensoftware.com

sales@elevensoftware.com

+1 (503) 222-4321

